



FLANGES & FITTINGS



Piping Division

EUROGUARCO SpA
Italy

La Spezia, Plant 1



The Company

Established since 1958 in La Spezia by Luciano Ghirlanda, the company has gradually developed to become a trustworthy reference point in the global market, where it operates directly and through distributors and agents.



La Spezia, Plant 2



Cremona, Plant 2



The activity is mainly focused on the production of products for various industrial fields such as Oil & Gas, Marine, Rail, Mechanical and Chemical.

Besides the company distributes semi-finished products to various processing and installation industries.



Quality System

Euroguarco work in Quality Assurance System Certificate:

- ISO 9001
- ISO/TS 29001
- API 6D license
- EN 9100 (Aeronautical Industry)
- 97/23/CE (PED)
- ATEX



Certification

Euroguarco products have Certifications & Approvals required for use in various Industrial Sectors, among which:

- Oil & Gas (DIN-DVGW)
- Marine Industry (MED/IMO)
- Railway Industry (EN 45545)
- Navy



Cremona, Plant 1



Products

Euroguarco

offer the following 'one-stop shopping' service over a complete range of flanges & fittings:

- Flanges, all types: blind, socket welding, slip-on, lap joint, screwed and welding neck type.

Materials: carbon steel, stainless steel and special alloys.



Conforming to standards ASME, ANSI B16.5 - B16.47 A/B, MSS-SP-44, API 605, BS 1560, BS 10, BS 3293, API 6A, ISO 7005. Sizes from 1/2" to 60".



- Butt weld pipe fittings, seamless and welded: LR or SR 45° elbows, LR or SR 90° elbows, LR or SR 180° return bends, equal tees, caps, reduction tees, concentric reducers, eccentric reducers. Conforming to standards ANSI B16.9 - B16.25 - B16.28, MSS- SP-75. Materials: carbon steel, stainless steel and special alloys.

- Forged fittings: threaded and socket-weld fittings: elbows, tees, caps, hex. head plugs, crosses, straight couplings, half couplings, reducing couplings, hex. shoulder nipples, reducing hex. shoulder nipples, straight nipples, swage nipples, M/F reducing bushings, street elbows, unions. Conforming to standards ANSI B16.11 - B36.10 BS 3799, MSS-SP83.



- Self-reinforcing branch outlets (O'Lets): threadolet, sockolet, weldolet and flanged outlets.

Codes: ASME B31.1 - B31.3 - B31.4 - B31.8.

Conforming to standards ANSI B16.11 - B36.10 - BS 3799, MSS-SP-83.



Quality Control & Testing

Euroguarco can satisfy all testing requirements, whether by in-house facilities or from external qualified laboratories next to the factory:

- Chemical analysis and mechanical tensile test of the materials:
 - Hardness survey
 - Impact test
- Visual and dimensional examinations
- Hydraulic test
- UT of welds
- Radiographic Examination (RT)
- Liquid Penetration (LP) on machine-finished welding ends per ANSI B16.34, Annex D
- Inspection of coated and painted surfaces
- Magnetic Particle (MP)
- Any other NDE on request

Flanges



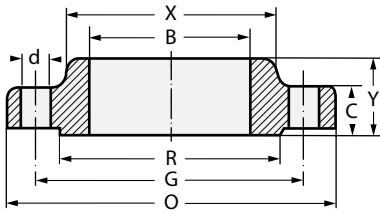
Flanges



Flanges

Slip On Class 150 Raised Face

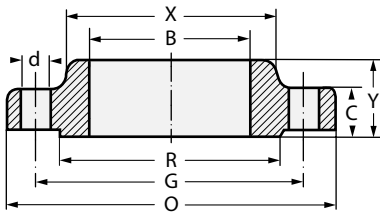
DN 15 to 600
NPS 1/2 to 24



Size		O	A	C	Y	X	R	Drilling		Wt.	
DN	NPS	mm.	mm.	mm.	mm.	mm.	mm.	No.	d mm.	G mm.	Kg.
15	1/2	90	22	11,5	16	30	34,9	4	16	60,5	0,4
20	3/4	100	28	13	16	38	42,9	4	16	70	0,7
25	1	110	34,5	14,5	17	49	50,8	4	16	79,5	0,8
32	1 1/4	120	43,5	16	21	59	63,5	4	16	89	1,1
40	1 1/2	130	49,5	17,5	22	65	73	4	16	98,5	1,4
50	2	150	62	19,5	25	78	92,1	4	20	120,5	2,2
65	2 1/2	180	74,5	22,5	29	90	104,8	4	20	139,5	3,6
80	3	190	90,5	24	30	108	127	4	20	152,5	4,1
-	3 1/2	215	103,5	24	32	122	139,7	8	20	178	5,2
100	4	230	116	24	33	135	157,2	8	20	190,5	5,6
125	5	255	143,5	24	36	164	185,7	8	22	216	6,3
150	6	280	170,5	25,5	40	192	215,9	8	22	241,5	7,5
200	8	345	221,5	29	44	246	269,9	8	22	298,5	12,6
250	10	405	276	30,5	49	305	323,8	12	26	362	18,5
300	12	485	327	32	56	365	381	12	26	432	28
350	14	535	359	35	57	400	412,8	12	30	476	38
400	16	600	410,5	37	64	457	469	16	30	540	46
450	18	635	462	40	68	505	533,4	16	33	578	50
500	20	700	513	43	73	559	584,2	20	33	635	64
600	24	815	616	48	83	664	692,2	20	36	749,5	89

Slip On Class 300 Raised Face

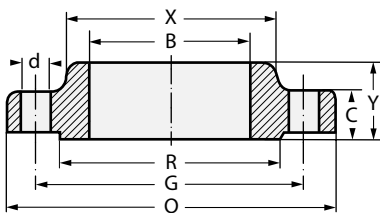
DN 15 to 600
NPS 1/2 to 24



Size		O	A	C	Y	X	R	Drilling		Wt.	
DN	NPS	mm.	mm.	mm.	mm.	mm.	mm.	No.	d mm.	G mm.	Kg.
15	1/2	95	22	14,5	22	38	34,9	4	16	66,5	0,7
20	3/4	120	28	16	25	48	42,9	4	20	82,5	1,1
25	1	125	34,5	17,5	27	54	50,8	4	20	89	1,4
32	1 1/4	135	43,5	19,5	27	64	63,5	4	20	98,5	1,8
40	1 1/2	155	49,5	21	30	70	73	4	22	114,5	2,6
50	2	165	62	22,5	33	84	92,1	8	20	127	3,4
65	2 1/2	190	74,5	25,5	38	100	104,8	8	22	149	4,4
80	3	210	90,5	29	43	118	127	8	22	168,5	6,1
-	3 1/2	230	103,5	30,5	44	133	139,7	8	22	184	7,5
100	4	255	116	32	48	146	157,2	8	22	200	10,1
125	5	280	143,5	35	51	178	185,7	8	22	235	12,5
150	6	320	170,5	37	52	206	215,9	12	22	270	14,1
200	8	380	221,5	41,5	62	260	269,9	12	26	330	24,9
250	10	445	276	48	67	321	323,8	16	30	387,5	37,1
300	12	520	327	51	73	375	381	16	33	451	50
350	14	585	359	54	76	426	412,8	20	33	514,5	70
400	16	650	410,5	57,5	83	483	469,9	20	36	571,5	97
450	18	715	462	60,5	89	533	533,4	24	36	628,5	123
500	20	775	513	63,5	95	587	584,2	24	36	686	133
600	24	915	616	70	106	702	692,2	24	42	813	208

Slip On Class 600 Raised Face

DN 15 to 600
NPS 1/2 to 24



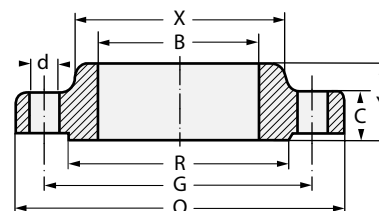
Size		O	A	C	Y	X	R	Drilling		Wt.	
DN	NPS	mm.	mm.	mm.	mm.	mm.	mm.	No.	d mm.	G mm.	Kg.
15	1/2	95	22	14,5	22	38	34,9	4	16	66,5	0,8
20	3/4	120	28	16	25	48	42,9	4	20	82,5	1,4
25	1	125	34,5	17,5	27	54	50,8	4	20	89	1,6
32	1 1/4	135	43,5	21	29	64	63,5	4	20	98,5	2,1
40	1 1/2	155	49,5	22,5	32	70	73	4	22	114,5	3,1
50	2	165	62	25,5	37	84	92,1	8	20	127	3,7
65	2 1/2	190	74,5	29	41	100	104,8	8	22	149	5,4
80	3	210	90,5	32	46	117	127	8	22	168,5	7,3
-	3 1/2	230	103,5	35	49	133	139,7	8	26	184	8,9
100	4	275	116	38,5	54	152	157,2	8	26	216	15,8
125	5	330	143,5	44,5	60	189	185,7	8	30	267	24,5
150	6	355	170,5	48	67	222	215,9	12	30	292	29,5
200	8	420	221,5	55,5	76	273	269,9	12	33	349	43
250	10	510	276	63,5	86	343	323,8	16	36	432	70
300	12	560	327	66,5	92	400	381	20	36	489	86
350	14	605	359	70	94	432	412,8	20	39	527	100
400	16	685	410,5	76,5	106	495	469,9	20	42	603	142
450	18	745	462	83	117	546	533,4	20	45	654	175
500	20	815	513	89	127	610	584,2	24	45	724	221
600	24	940	616	102	140	718	692,2	24	52	838	315

Size		O	A	C	Y	X	R	Drilling			Wt.
DN	NPS	mm.	mm.	mm.	mm.	mm.	mm.	No.	d mm.	G mm.	Kg.
15	1/2	120	22	22,5	32	38	34,9	4	22	82,5	1,7
20	3/4	130	28	25,5	35	44	42,9	4	22	89	2,3
25	1	150	34,5	29	41	52	50,8	4	26	101,5	3,4
32	1 1/4	160	43,5	29	41	64	63,5	4	26	111	3,9
40	1 1/2	180	49,5	32	44	70	73	4	30	124	5,4
50	2	215	62	38,5	57	105	92,1	8	26	165	9,8
65	2 1/2	245	74,5	41,5	64	124	104,8	8	30	190,5	13,7
80	3	240	90,5	38,5	54	127	127	8	26	190,5	11,6
100	4	295	116	44,5	70	159	157,2	8	33	235	19,8
125	5	350	143,5	51	79	190	185,7	8	36	279,5	32
150	6	380	170,5	56	86	235	215,9	12	33	317,5	41,2
200	8	470	221,5	63,5	102	298	269,9	12	39	393,5	71
250	10	545	276	70	108	368	323,8	16	39	470	100
300	12	610	327	79,5	117	419	381	20	39	533,5	133
350	14	640	359	86	130	451	412,8	20	42	559	152
400	16	705	410,5	89	133	508	469,9	20	45	616	184
450	18	785	462	102	152	565	533,4	20	52	686	258
500	20	855	513	108,8	159	622	584,2	20	56	749,5	317
600	24	1040	616	140	203	749	692,2	20	68	901,5	608

Size		O	B min	C	Y	X	R	Drilling			Wt.
DN	NPS	mm.	mm.	mm.	mm.	mm.	mm.	No.	d mm.	G mm.	Kg.
15	1/2	120	22	22,5	32	38	34,9	4	22	82,5	1,7
20	3/4	130	28	25,5	35	44	42,9	4	22	89	2,3
25	1	150	34,5	29	41	52	50,8	4	26	101,5	3,4
32	1 1/4	160	43,5	29	41	64	63,5	4	26	111	3,9
40	1 1/2	180	49,5	32	44	70	73	4	30	124	5,4
50	2	215	62	38,5	57	105	92,1	8	26	165	9,8
65	2 1/2	245	74,5	41,5	64	124	104,8	8	30	190,5	13,7

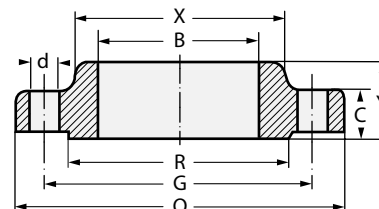
Slip On Class 900 Raised Face

DN 15 to 600
NPS 1/2 to 24



Slip On Class 1500 Raised Face

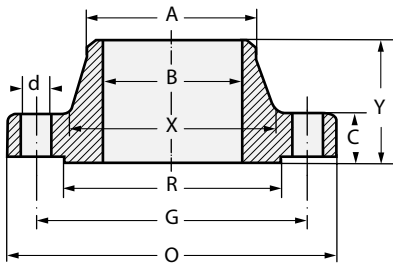
DN 15 to 65
NPS 1/2 to 2 1/2



Flanges

Welding Neck Class 150 Raised Face

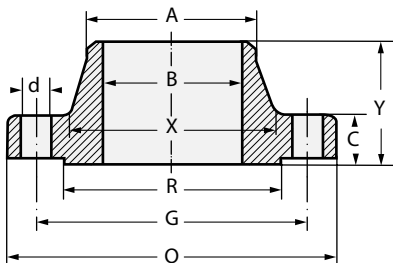
DN 15 to 600
NPS 1/2 to 24



Size		O	A	C	Y	X	R	Drilling		Wt.	
DN	NPS	mm.	mm.	mm.	mm.	mm.	mm.	No.	d mm.	G mm.	Kg.
15	1/2	90	21,5	11,5	48	30	34,9	4	16	60,5	0,5
20	3/4	100	26,5	13	52	38	42,9	4	16	70	0,7
25	1	110	33,5	14,5	56	49	50,8	4	16	79,5	1,1
32	1 1/4	120	42	16	57	59	63,5	4	16	89	1,5
40	1 1/2	130	48,5	17,5	62	65	73	4	16	98,5	1,8
50	2	150	60,5	19,5	64	78	92,1	4	20	120,5	2,7
65	2 1/2	180	73	22,5	70	90	104,8	4	20	139,5	4,4
80	3	190	89	24	70	108	127	4	20	152,5	5,2
-	3 1/2	215	101,5	24	71	122	139,7	8	20	178	6,4
100	4	230	114,5	24	76	135	157,2	8	20	190,5	7,5
125	5	255	141,5	24	89	164	185,7	8	22	216	9,2
150	6	280	168,5	25,5	89	192	215,9	8	22	241,5	11
200	8	345	219	29	102	246	269,9	8	22	298,5	18,3
250	10	405	273	30,5	102	305	323,8	12	26	362	25
300	12	485	324	32	114	365	381	12	26	432	39
350	14	535	355,5	35	127	400	412,8	12	30	476	51
400	16	600	406,5	37	127	457	469,9	16	30	540	60
450	18	635	457	40	140	505	533,4	16	33	578	71
500	20	700	508	43	145	559	584,2	20	33	635	88
600	24	815	609,5	48	152	664	692,2	20	36	749,5	119

Welding Neck Class 300 Raised Face

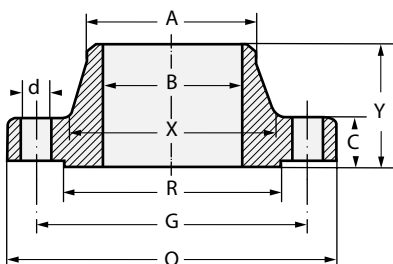
DN 15 to 600
NPS 1/2 to 24



Size		O	A	C	Y	X	R	Drilling		Wt.	
DN	NPS	mm.	mm.	mm.	mm.	mm.	mm.	No.	d mm.	G mm.	Kg.
15	1/2	95	21,5	14,5	52	38	34,9	4	16	66,5	0,8
20	3/4	120	26,5	16	57	48	42,9	4	20	82,5	1,3
25	1	125	33,5	17,5	62	54	50,8	4	20	89	1,7
32	1 1/4	135	42	19,5	65	64	63,5	4	20	98,5	2,2
40	1 1/2	155	48,5	21	68	70	73	4	22	114,5	3,2
50	2	165	60,5	22,5	70	84	92,1	8	20	127	3,6
65	2 1/2	190	73	25,5	76	100	104,8	8	22	149	5,4
80	3	210	89	29	79	118	127	8	22	168,5	7,4
-	3 1/2	230	101,5	30,5	81	133	139,7	8	22	184	8,9
100	4	255	114,5	32	86	146	157,2	8	22	200	11,9
125	5	280	141,5	35	98	178	185,7	8	22	235	16
150	6	320	168,5	37	98	206	215,9	12	22	270	20
200	8	380	219	41,5	111	260	269,9	12	26	330	31
250	10	445	273	48	117	321	323,8	16	30	387,5	44
300	12	520	324	51	130	375	381	16	33	451	54
350	14	585	355,5	54	143	426	412,8	20	33	514,5	88
400	16	650	406,5	57,5	146	483	469,9	20	36	571,5	113
450	18	715	457	60,5	159	533	533,4	24	36	628,5	134
500	20	775	508	63,5	162	587	584,2	24	36	686	171
600	24	915	609,5	70	168	702	692,2	24	42	813	238

Welding Neck Class 600 Raised Face

DN 15 to 600
NPS 1/2 to 24



Size		O	A	C	Y	X	R	Drilling		Wt.	
DN	NPS	mm.	mm.	mm.	mm.	mm.	mm.	No.	d mm.	G mm.	Kg.
15	1/2	95	21,5	14,5	52	38	34,9	4	16	66,5	0,9
20	3/4	120	26,5	16	57	48	42,9	4	20	82,5	1,5
25	1	125	33,5	17,5	62	54	50,8	4	20	89	1,9
32	1 1/4	135	42	21	67	64	63,5	4	20	98,5	2,6
40	1 1/2	155	48,5	22,5	70	70	73	4	22	114,5	3,3
50	2	165	60,5	25,5	73	84	92,1	8	20	127	4,7
65	2 1/2	190	73	29	79	100	104,8	8	22	149	6,5
80	3	210	89	32	83	117	127	8	22	168,5	8,7
-	3 1/2	230	101,5	35	86	133	139,7	8	26	184	11,2
100	4	275	114,5	38,5	102	152	157,2	8	26	216	18,1
125	5	330	141,5	44,5	114	189	185,7	8	30	267	30
150	6	355	168,5	48	117	222	215,9	12	30	292	36
200	8	420	219	55,5	133	273	269,9	12	33	349	50
250	10	510	273	63,5	152	343	323,8	16	36	432	90
300	12	560	324	66,5	156	400	381	20	36	489	110
350	14	605	355,5	70	165	432	412,8	20	39	527	150
400	16	685	406,5	76,5	178	495	469,9	20	42	603	190
450	18	745	457	83	184	546	533,4	20	45	654	240
500	20	815	508	89	190	610	584,2	24	45	724	295
600	24	940	609,5	102	203	718	692,2	24	52	838	365

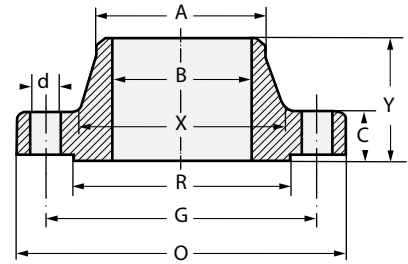
Size		O mm.	A mm.	C mm.	Y mm.	X mm.	R mm.	Drilling			Wt. Kg.
DN	NPS							No.	d mm.	G mm.	
15	1/2	120	21,5	22,5	60	38	34,9	4	22	82,5	1,9
20	3/4	130	26,5	25,5	70	44	42,9	4	22	89	2,6
25	1	150	33,5	29	73	52	50,8	4	26	101,5	3,8
32	1 1/4	160	42	29	73	64	63,5	4	26	111	4,4
40	1 1/2	180	48,5	32	83	70	73	4	30	124	6,1
50	2	215	60,5	38,5	102	105	92,1	8	26	165	11,1
65	2 1/2	245	73	41,5	105	124	104,8	8	30	190,5	15,5
80	3	240	89	38,5	102	127	127	8	26	190,5	14
100	4	295	114,5	44,5	114	159	157,2	8	33	235	23
125	5	350	141,5	51	127	190	185,7	8	36	279,5	37
150	6	380	168,5	56	140	235	215,9	12	33	317,5	49
200	8	470	219	63,5	162	298	269,9	12	39	393,5	84
250	10	545	273	70	184	368	323,8	16	39	470	123
300	12	610	324	79,5	200	419	381	20	39	533,5	163
350	14	640	355,5	86	213	451	412,8	20	42	559	186
400	16	705	406,5	89	216	508	469,9	20	45	616	224
450	18	785	457	102	229	565	533,4	20	52	686	30
500	20	855	508	108	248	622	584,2	20	56	749,5	373
600	24	1040	609,5	140	292	749	692,2	20	68	901,5	680

Size		O mm.	A mm.	C mm.	Y mm.	X mm.	R mm.	Drilling			Wt. Kg.
DN	NPS							No.	d mm.	G mm.	
15	1/2	120	21,5	22,5	60	38	34,9	4	22	82,5	1,9
20	3/4	130	26,5	25,5	70	44	42,9	4	22	89	2,6
25	1	150	33,5	29	73	52	50,8	4	26	101,5	3,8
32	1 1/4	160	42	29	73	64	63,5	4	26	111	4,4
40	1 1/2	180	48,5	32	83	70	73	4	30	124	6,1
50	2	215	60,5	38,5	102	105	92,1	8	26	165	11,1
65	2 1/2	245	73	41,5	105	124	104,8	8	30	190,5	15,5
80	3	270	89	48	118	133	127	8	33	203	20,5
100	4	310	114,5	54	124	165	157,2	8	36	241,5	30,5
125	5	375	141,5	73,5	155	197	185,7	8	42	292	58
150	6	395	168,5	83	171	229	215,9	12	39	317,5	70
200	8	485	219	92	213	292	269,9	12	45	393,5	119
250	10	585	273	108	254	368	323,8	12	52	482,5	204
300	12	675	324	124	283	451	381	16	56	571,5	303
350	14	750	355,5	133,5	298	495	412,8	16	60	635	400
400	16	825	406,5	146,5	311	552	469,9	16	68	705	510
450	18	915	457	162	327	507	533,4	16	76	774,5	-
500	20	985	508	178	356	641	584,2	16	80	832	-
600	24	1170	610	203,5	406	762	692,2	16	94	990,5	-

Size		O mm.	A mm.	C mm.	Y mm.	X mm.	R mm.	Drilling			Wt. Kg.
DN	NPS							No.	d mm.	G mm.	
15	1/2	135	21,5	30,5	73	43	34,9	4	22	89	3,6
20	3/4	140	26,5	32	79	51	42,9	4	22	95	4
25	1	160	33,5	35	89	57	50,8	4	26	108	6
32	1 1/4	185	42	38,5	95	73	63,5	4	30	130	9
40	1 1/2	205	48,5	44,5	111	79	73	4	33	146	13
50	2	235	60,5	51	127	95	92,1	8	30	171,5	19
65	2 1/2	270	73	57,5	143	114	104,8	8	33	197	24
80	3	305	89	67	168	133	127	8	36	228,5	43
100	4	355	114,5	76,5	190	165	157,2	8	42	273	66
125	5	420	141,5	92,5	229	203	185,7	8	48	324	111
150	6	485	168,5	108	273	235	215,9	8	56	368,5	172
200	8	550	219	127	318	305	269,9	12	56	438	261
250	10	675	273	165,5	419	375	323,8	12	68	539,5	485
300	12	760	324	184,5	464	441	381	12	76	619	730

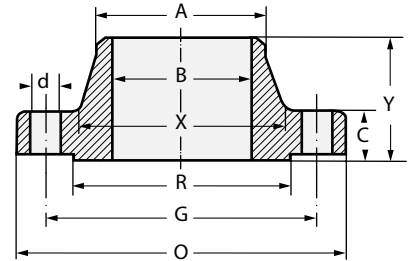
Welding Neck Class 900 Raised Face

DN 15 to 600
NPS 1/2 to 24



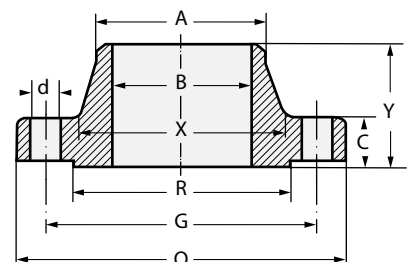
Welding Neck Class 1500 Raised Face

DN 15 to 600
NPS 1/2 to 24



Welding Neck Class 2500 Raised Face

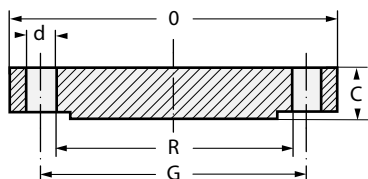
DN 15 to 300
NPS 1/2 to 12



Flanges

Blind Class 150 Raised Face

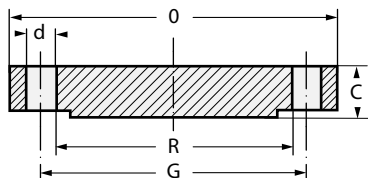
DN 15 to 600
NPS 1/2 to 24



Size		O	C	R	Drilling			Wt.
DN	NPS	mm.	mm.	mm.	No.	d mm.	G mm.	Kg.
15	1/2	90	11,5	34,9	4	16	60,5	0,4
20	3/4	100	13	42,9	4	16	70	0,7
25	1	110	14,5	50,8	4	16	79,5	0,9
32	1 1/4	120	16	63,5	4	16	89	1,3
40	1 1/2	130	17,5	73	4	16	98,5	1,6
50	2	150	19,5	92,1	4	20	120,5	2,6
65	2 1/2	180	22,5	104,8	4	20	139,5	4,1
80	3	190	24	127	4	20	152,5	5
-	3 1/2	215	24	139,7	8	20	178	6,4
100	4	230	24	157,2	8	20	190,5	7,1
125	5	255	24	185,7	8	22	216	9
150	6	280	25,5	215,9	8	22	241,5	12
200	8	345	29	269,9	8	22	298,5	21
250	10	405	30,5	323,8	12	26	362	30
300	12	485	32	381	12	26	432	45
350	14	535	35	412,8	12	30	476	59
400	16	600	37	469,9	16	30	540	79
450	18	635	40	533,4	16	33	578	97
500	20	700	43	584,2	20	33	635	124
600	24	815	48	692,2	20	36	749,5	188

Blind Class 300 Raised Face

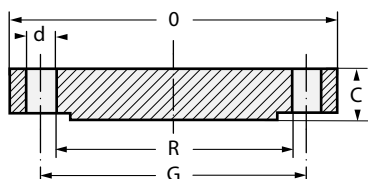
DN 15 to 600
NPS 1/2 to 24



Size		O	C	R	Drilling			Wt.
DN	NPS	mm.	mm.	mm.	No.	d mm.	G mm.	Kg.
15	1/2	95	14,5	34,9	4	16	66,5	0,7
20	3/4	120	16	42,9	4	20	82,5	1,2
25	1	125	17,5	50,8	4	20	89	1,5
32	1 1/4	135	19,5	63,5	4	20	98,5	2
40	1 1/2	155	21	73	4	22	114,5	2,9
50	2	165	22,5	92,1	8	20	127	3,4
65	2 1/2	190	25,5	104,8	8	22	149	5,1
80	3	210	29	127	8	22	168,5	7
-	3 1/2	230	30,5	139,7	8	22	184	8,9
100	4	255	32	157,2	8	22	200	11,8
125	5	280	35	185,7	8	22	235	15,5
150	6	320	37	215,9	12	22	270	21,3
200	8	380	41,5	269,9	12	26	330	35,2
250	10	445	48	323,8	16	30	387,5	67
300	12	520	51	381	16	33	451	82
350	14	585	54	412,8	20	33	514,5	106
400	16	650	57,5	469,9	20	36	571,5	140
450	18	715	60,5	533,4	24	36	628,5	178
500	20	775	63,5	584,2	24	36	686	223
600	24	915	70	692,2	24	42	813	345

Blind Class 600 Raised Face

DN 15 to 600
NPS 1/2 to 24



Size		O	C	R	Drilling			Wt.
DN	NPS	mm.	mm.	mm.	No.	d mm.	G mm.	Kg.
15	1/2	95	14,5	34,9	4	16	66,5	0,7
20	3/4	120	16	42,9	4	20	82,5	1,2
25	1	125	17,5	50,8	4	20	89	1,5
32	1 1/4	135	21	63,5	4	20	98,5	2
40	1 1/2	155	22,5	73	4	22	114,5	3,2
50	2	165	25,5	92,1	8	20	127	4,3
65	2 1/2	190	29	104,8	8	22	149	6
80	3	210	32	127	8	22	168,5	8
-	3 1/2	230	35	139,7	8	26	184	10,5
100	4	275	38,5	157,2	8	26	216	18
125	5	330	44,5	185,7	8	30	267	29
150	6	355	48	215,9	12	30	292	36
200	8	420	55,5	269,9	12	33	349	58
250	10	510	63,5	323,8	16	36	432	98
300	12	560	66,5	381	20	36	489	125
350	14	605	70	412,8	20	39	527	151
400	16	685	76,5	469,9	20	42	603	215
450	18	745	83	533,4	20	45	654	275
500	20	815	89	584,2	24	45	724	350
600	24	940	102	692,2	24	52	838	532

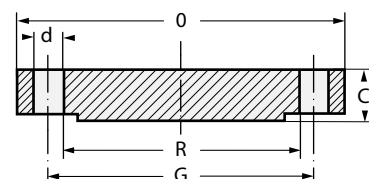
Size		O mm.	C mm.	R mm.	Drilling No.	Drilling		Wt. Kg.
DN	NPS					d mm.	G mm.	
15	1/2	120	22,5	34,9	4	22	82,5	1,8
20	3/4	130	25,5	42,9	4	22	89	2,4
25	1	150	29	50,8	4	26	101,5	3,6
32	1 1/4	160	29	63,5	4	26	111	4,1
40	1 1/2	180	32	73	4	30	124	5,8
50	2	215	38,5	92,1	8	26	165	10,1
65	2 1/2	245	41,5	104,8	8	30	190,5	14
80	3	240	38,5	127	8	26	190,5	13,1
100	4	295	44,5	157,2	8	33	235	22,1
125	5	350	51	185,7	8	36	279,5	36,5
150	6	380	56	215,9	12	33	317,5	47,4
200	8	470	63,5	269,9	12	39	393,5	82,5
250	10	545	70	323,8	16	39	470	123
300	12	610	79,5	381	20	39	533,5	174
350	14	640	86	412,8	20	42	559	206
400	16	705	89	469,9	20	45	616	259
450	18	785	102	533,4	20	52	686	367
500	20	855	108	584,2	20	56	749,5	463
600	24	1040	140	692,2	20	68	901,5	875

Size		O mm.	C mm.	R mm.	Drilling No.	Drilling		Wt. Kg.
DN	NPS					d mm.	G mm.	
15	1/2	120	22,5	34,9	4	22	82,5	1,8
20	3/4	130	25,5	42,9	4	22	89	2,4
25	1	150	29	50,8	4	26	101,5	3,6
32	1 1/4	160	29	63,5	4	26	111	4,1
40	1 1/2	180	32	73	4	30	124	5,8
50	2	215	38,5	92,1	8	26	165	10
65	2 1/2	245	41,5	104,8	8	30	190,5	14
80	3	270	48	127	8	33	203	19
100	4	310	54	157,2	8	36	241,5	30
125	5	375	73,5	185,7	8	42	292	58
150	6	395	83	215,9	12	39	317,5	72
200	8	485	92	269,9	12	45	393,5	122
250	10	585	108	323,8	12	52	482,5	210
300	12	675	124	381	16	56	571,5	315
350	14	750	133,5	412,8	16	60	635,5	-
400	16	825	146,5	469,9	16	68	705	-
450	18	915	162	533,4	16	76	774,5	-
500	20	985	178	584,2	16	80	832	-
600	24	1170	203,5	692,2	16	94	990,5	-

Size		O mm.	C mm.	R mm.	Drilling No.	Drilling		Wt. Kg.
DN	NPS					d mm.	G mm.	
15	1/2	135	30,5	34,9	4	22	89	-
20	3/4	140	32	32,9	4	22	95	-
25	1	160	35	50,8	4	26	108	-
32	1 1/4	185	38,5	63,5	4	30	130	-
40	1 1/2	205	44,5	73	4	33	146	-
50	2	235	51	92,1	8	30	171,5	-
65	2 1/2	270	57,5	104,8	8	33	197	-
80	3	305	67	127	8	36	228,5	-
100	4	355	76,5	157,2	8	42	263	-
125	5	420	92,5	185,7	8	48	324	-
150	6	485	108	215,9	8	56	368,5	-
200	8	550	127	269,9	12	56	438	-
250	10	675	165,5	323,8	12	68	539,5	-
300	12	760	184,5	381	12	76	619	-

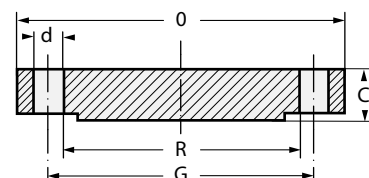
Blind Class 900 Raised Face

DN 15 to 600
NPS 1/2 to 24



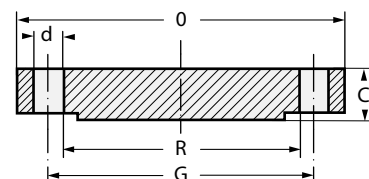
Blind Class 1500 Raised Face

DN 15 to 600
NPS 1/2 to 24



Blind Class 2500 Raised Face

DN 15 to 300
NPS 1/2 to 12



Fittings



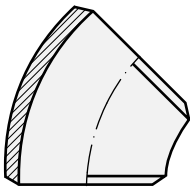
Fittings



Fittings

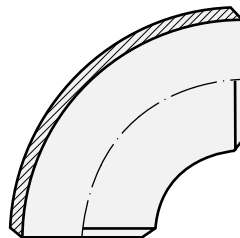
Butt Welding

Elbow
DN 1/2" ÷ 48"



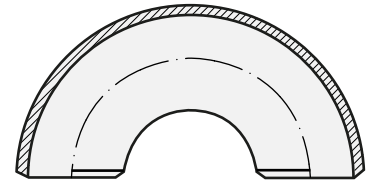
45° Long Radius
ANSI B16.9

Elbow
DN 1/2" ÷ 48"



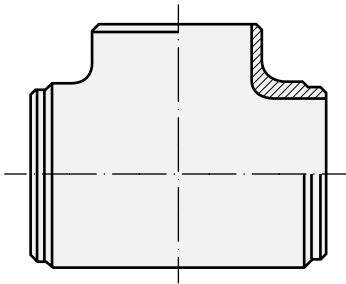
90° Short Radius B16.28
90° Long Radius B16.9

Returns
DN 1/2" ÷ 24"



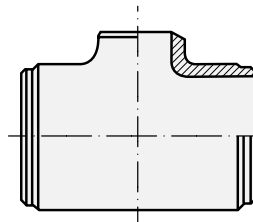
180° Short Radius B16.28
180° Long Radius B16.9

Straight Tees
DN 1/2" ÷ 48"



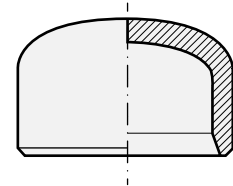
ANSI B16.9

Reducing Tees
DN 1/2" ÷ 48"



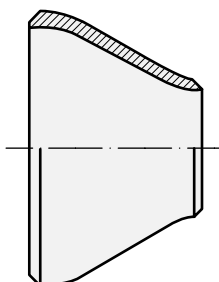
ANSI B16.9

Caps
DN 1/2" ÷ 48"



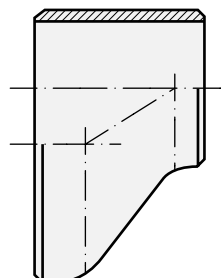
ANSI B16.9

Concentric Reducer
DN 1/2" ÷ 48"



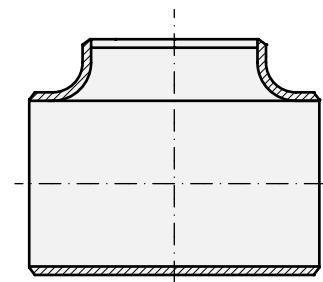
ANSI B16.9

Eccentric Reducer
DN 1/2" ÷ 48"



ANSI B16.9

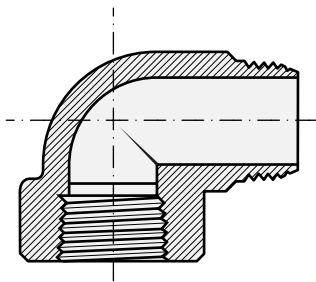
Barred Tees
DN 1/2" ÷ 48"



ANSI B16.9

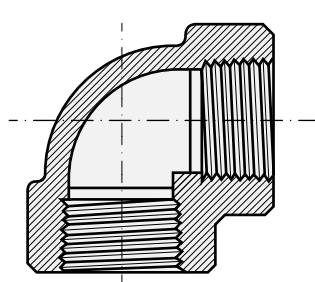
Forged Class 3000 Lb. / 6000 Lb.

90° Street Elbows
DN 1/4" ÷ 2"



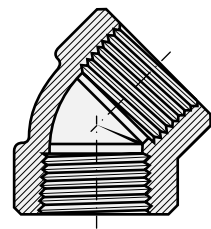
Thread according to B.21

Elbow 90°
DN 1/4" ÷ 4"



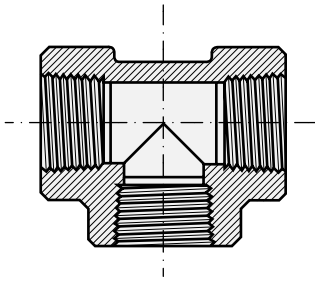
Dimensions according to ANSI B16.11
Thread according to B.2-1

Elbow 45°
DN 1/4" ÷ 4"



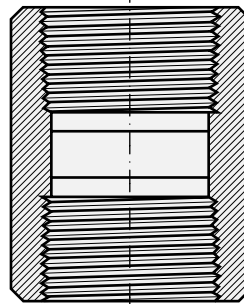
Dimensions according to ANSI B16.11
Thread according to B.2.1

Tee
DN 1/4" ÷ 4"



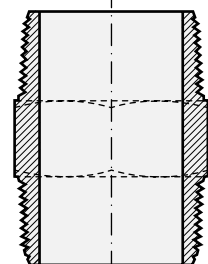
Dimensions according to ANSI B16.11
Thread according to B.2.1

Coupling
DN 1/4" ÷ 4"



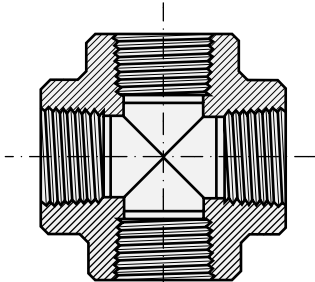
Dimensions according to ANSI B16.11
Thread according to B.2.1

Hexagonal Nipples
DN 1/4" ÷ 4"



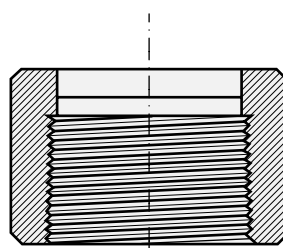
Thread according to B.2.1

Cross
DN 1/4" ÷ 4"



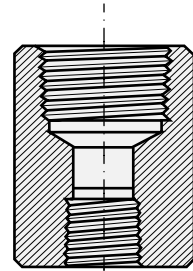
Dimensions according to ANSI B16.11
Thread according to B.2.1

Half Coupling
DN 1/4" ÷ 4"



Dimensions according to ANSI B16.11
Thread according to B.2.1

Reducing Coupling
DN 3/8" ÷ 4"



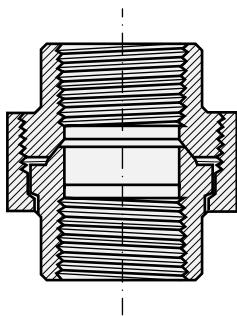
Same dimensions as for Couplings
Thread according to B.2.1

Fittings

Forged Class 3000 Lb. / 6000 Lb.

Female-female Unions

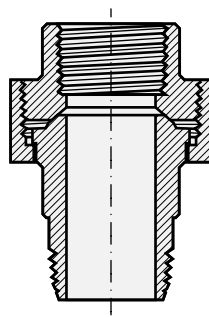
DN 1/4" ÷ 4"



Thread according to B.2.1

Male-female Unions

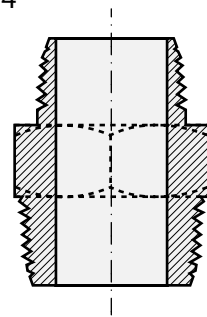
DN 1/4" ÷ 2"



Thread according to B.2.1

Reducing Hexagonal Nipples

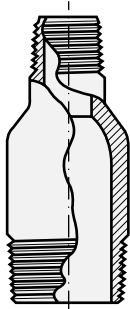
DN 3/8" ÷ 4"



Thread according to B.2.1

Swedge Nipples

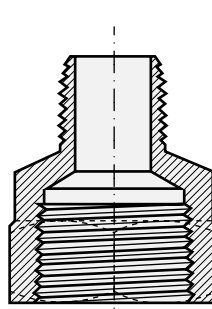
DN 3/8" ÷ 4"



Thread according to B.2.1

Female-male Reducer

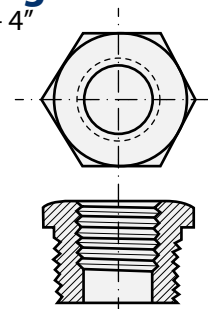
DN 3/8" ÷ 4"



Thread according to B.2.1

Hexagonal Head Bushings

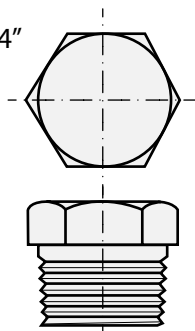
DN 3/8" ÷ 4"



Dimensions according to ANSI B16.11
Thread according to B.2.1

Hexagonal Head Plugs

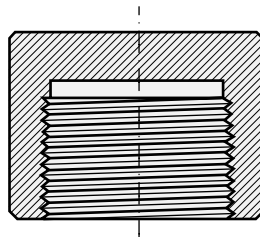
DN 1/4" ÷ 4"



Dimensions according to ANSI B16.11
Thread according to B.2.1

Caps

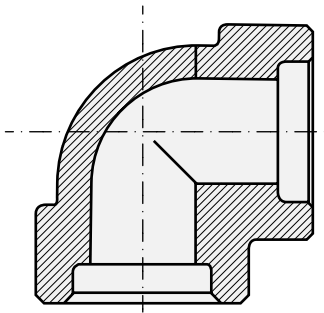
DN 1/4" ÷ 4"



Dimensions according to ANSI B16.11
Thread according to B.2.1

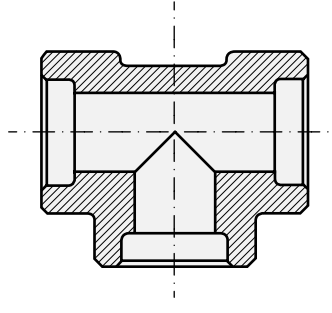
Socket Welding Class 3000 - 6000

Elbow 90°
DN 1/4" ÷ 4"



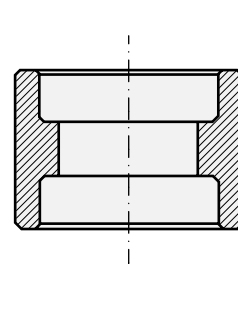
Socket welding end and dimensions according to ANSI B16.11

Tees
DN 1/4" ÷ 4"



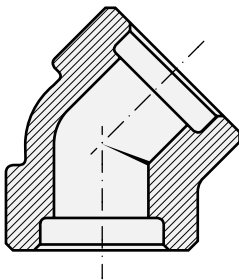
Socket welding end and dimensions according to ANSI B16.11

Coupling
DN 1/4" ÷ 4"



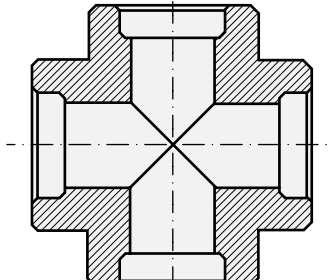
Socket welding end and dimensions according to ANSI B16.11

Elbow 45°
DN 1/4" ÷ 4"



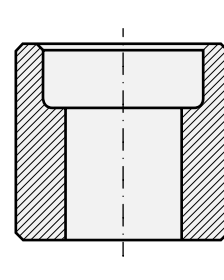
Socket welding end and dimensions according to ANSI B16.11

Cross
DN 1/4" ÷ 4"



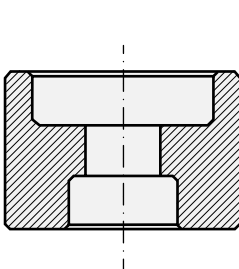
Socket welding end and dimensions according to ANSI B16.11

Half Coupling
DN 1/4" ÷ 4"



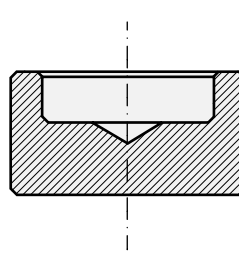
Socket welding end and dimensions according to ANSI B16.11

Reducing Coupling
DN 3/8" ÷ 2"



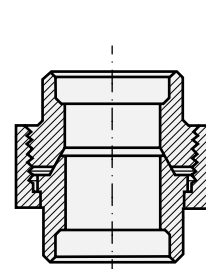
Socket welding end according to ANSI B16.11

Cap
DN 1/4" ÷ 4"



Socket welding end according to ANSI B16.11

Union
DN 1/4" ÷ 4"



Socket welding end according to ANSI B16.11

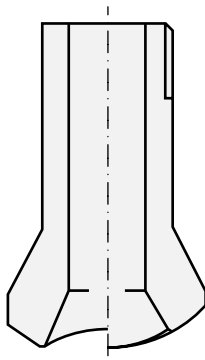
Fittings

Socket Welding Class 3000 - 6000

Nipple Outlets

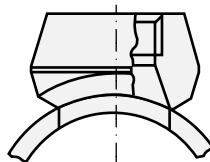
(Plain End - Threaded End - Bevel End)

DN 1/2" ÷ 2"



Threaded Outlets Reducing Size

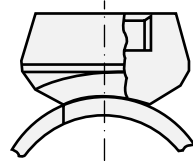
DN 1/2" ÷ 4"



Size on request

Threaded Outlets Full Size

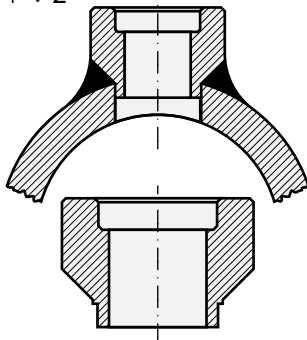
DN 1/2" ÷ 2"



Size on request

Welding Bosses

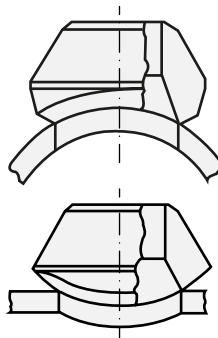
DN 1/4" ÷ 2"



Socket welding end according to ANSI B16.11

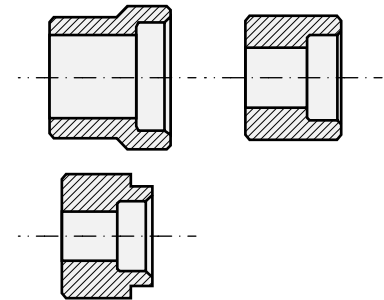
Welding Outlet (Socket Outlet)

DN 1/2" ÷ 36"



Reducer Insert

DN 1/2" ÷ 3"



Socket welding end according to ANSI B16.11



Euroguarco Divisions



Piping

Conforming to ANSI, BWG, AWG, BS and other international standards:

line pipe, boiler pipe, heat-exchanger tube, tube expanders, torque wrenches, condenser tube, boiler and heater tubes, U-tubes, assembly bundle tubes, finned tube for air-cooling systems; Carbon steel, stainless steel, Cu-Ni, admiralty brass, cast iron, special alloys.



Insulation

High temperature textiles (fabrics, tapes, ropes, sleeves), insulating blankets, felts, millboards, papers

and mouldables, pre-formed insulating jackets, welding blankets, polymeric foam insulating boards, acoustic boards and sound barriers, fire-resistant textiles, compensation joints. Speciality items for marine, oil & gas, steel, glass industries.



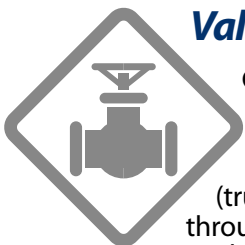
Engineering

Often in cooperation with partners, Euroguarco has performed several turn-key and sub-contract works

for the engineering, supply and construction of industrial and civil projects. Based on the project, Euroguarco can offer his customers with advantageous solution by reducing the cost impact of many services that normally EPCs give in outsource. Some cases:

- Piping system engineering, fabrication and testing
- Pig Launcher & Receiver (Iraq, Libya)
- Gas/Oil Tanker Jetty (Iran)
- Gas, oil or finished products Pipeline project (Turkey, Iran, Iraq)
- Slug Catcher (Iran)
- Steel & alloy piping structure (Mexico)
- Air and water cooling systems (Iraq)
- Insulation cut-on-design and supply for piping and pressure vessels (Kazakhstan, Italy)
- Flares and burners (Iraq)
- LPG storage and distribution system (Ghana, Tanzania)
- LPG filling station (Tanzania)
- Railway project (Ghana)
- Pumping station (Russia)
- Stations on skid (Iraq)

Euroguarco is also active in environment friendly projects, in cooperation or in consortium with specialized partner companies.



Valve

Gate, Swing-Check, Globe valves. Ball valves (trunnion, floating, through conduit), wrench and gear

operator. Forged and cast steel types. Butterfly, Wafer-type, Diaphragm and Knife-Gate valves.

Valves in bronze and brass: gate, globe, swing check and ball type. Conforming to dimensional standards ASME, ANSI, API, BS. Materials: carbon steel, stainless steel, cast iron, ductile iron and alloys. Sizes from 1/4" to 60", depending on the type of valve. Rating from 150 to 2500 Lbs.



Gasket

Conforming to ASME, DIN, EN and BS standards: compressed jointing sheets FASIT®, flexible graphite

GRAFLEX®, PTFE based sheets GUAFILON®, mica compound sheets GUARMICA®, gland packings, o-rings, die-cut gaskets, Weaveline gaskets, spiral-wound gaskets, metal-jacketed gaskets, ring-joint gaskets, flat metal gaskets, laminated gaskets, rubber gaskets, cam-profile gaskets, textile gaskets, manhole gaskets, etc.



Selected References

- ABB (Italy)
- ADOC Japan (EAU)
- Agip (Italy)
- Agip KCO (Kazakhstan)
- AGOCO (Libya)
- Alenia Aeronavale (Italy)
- Ameira Petroleum (Egypt)
- Ansaldo Energia (Italy)
- ASRY Shipyards (Bahrain)
- Attok Refinery (Pakistan)
- Bangladesh Gas Field Co. (Bangladesh)
- Banias Power Co. (Syria)
- Banias Refinery (Syria)
- Bateman-Litwin (France)
- Belleli (Italy)
- BP (Iraq)
- Brega (Libya)
- Brembana (Italy)
- Cairo Refining (Egypt)
- CERN (Switzerland)
- Daura Refinery (Iraq)
- Dongang Boiler Group (China)
- Eastern Refinery (Bangladesh)
- Eco Petrol (Colombia)
- Edipower (Italy)
- ENEL (Italy)
- ENI (Italy)
- Enppi (Egypt)
- Fincantieri (Italy)
- Finmeccanica (Italy)
- Fondital (Italy)
- Foster Wheeler (Italy)
- Gas Transmission Co. Ltd (Bangladesh)
- GAZPROM (Russia)
- GE Nuovo Pignone (USA, Italy)
- Homs Refinery (Syria)
- Jordan Petroleum Refinery (Jordan)
- LukOil (Russia)
- MAERSKOIL (Kazakhstan)
- Magotteaux (Belgium)
- Mangiarotti (Italy)
- Mari Gas Co. (Pakistan)
- McDermott (USA)
- Mellitah (Libya)
- Midland Refinery (Iraq)
- Ministry of Defense (Italy)
- National Refinery (Pakistan)
- NIGC (Iran)
- North Oil Company (Iraq)
- NPCC (EAU)
- Nuovo Pignone - GE (Italy)
- Officine Resta (Italy)
- Olmi - Alfa Laval (Italy)
- OPET Petrol (Turkey)
- ORYXGAS (Switzerland)
- Oto Melara (Italy)
- PDI-Pemex (Mexico)
- Petrojet (Egypt)
- Qatar Gas (Qatar)
- Ras Gas (Qatar)
- Saipem (Italy)
- Saras (Italy)
- SCOP (Iraq)
- Sirte Oil Co. (Libya)
- Snam (Italy)
- Solvay (Italy)
- South Oil Company (Iraq)
- SGS Oil & Gas (Czech Republic)
- SSGC (Pakistan)
- Kala Naft (Iran)
- Kordestan Petrochemical (Iran)
- MAPNA (Iran)
- Metec (Ethiopia)
- Nargan (Iran)
- NIOC (Iran)
- PDO (Oman)
- Pentair (USA)
- POGC (Iran)
- Yara (Italy)
- Sung Kyong (South Korea)
- Tecnimont (Italy)
- Tehran Refinery (Iran)
- Termomeccanica Italiana
- Trenitalia (Italy)
- Waha Oil Company (Libya)
- Warri Refinery (Nigeria)



EUROGUARCO

Euroguarco SpA

Headquarters

Via Terralba - Loc. Pietralba
19021 Arcola (La Spezia) - Italy
Tel. +39 0187 562611
Fax +39 0187 562955

info@euroguarco.com

Industrial Unit

Via Leonardo Da Vinci, 6/D
26020 Ticengo (Cremona) - Italy
Tel. +39 0374 71006
Fax +39 0374 71277

www.euroguarco.com

