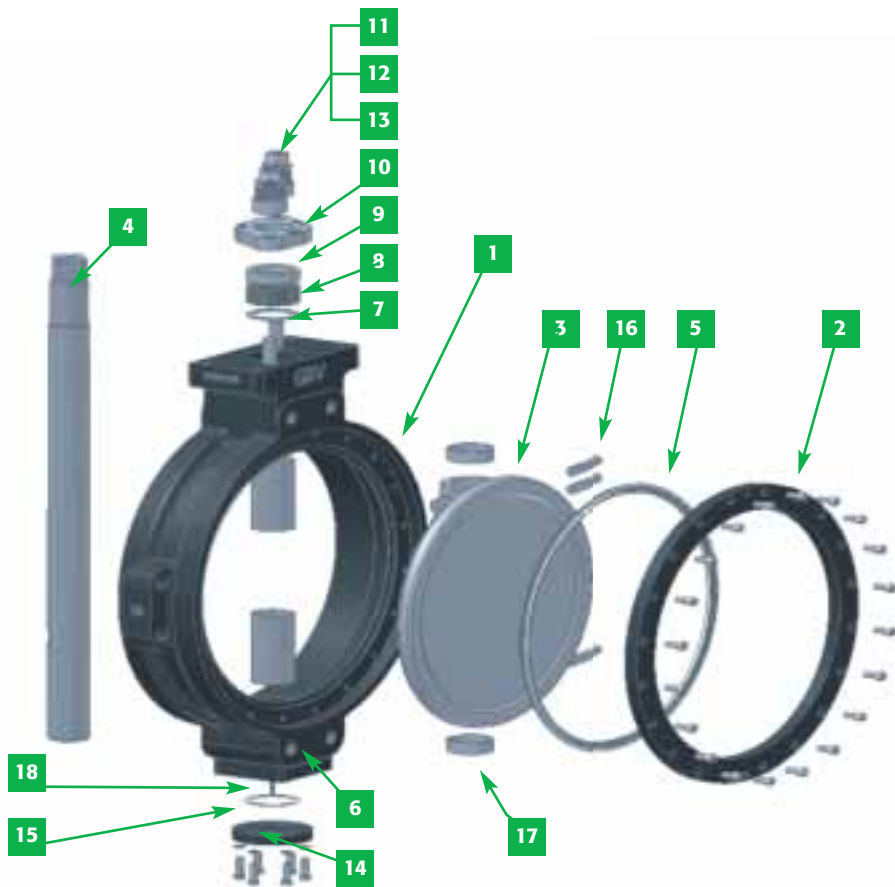


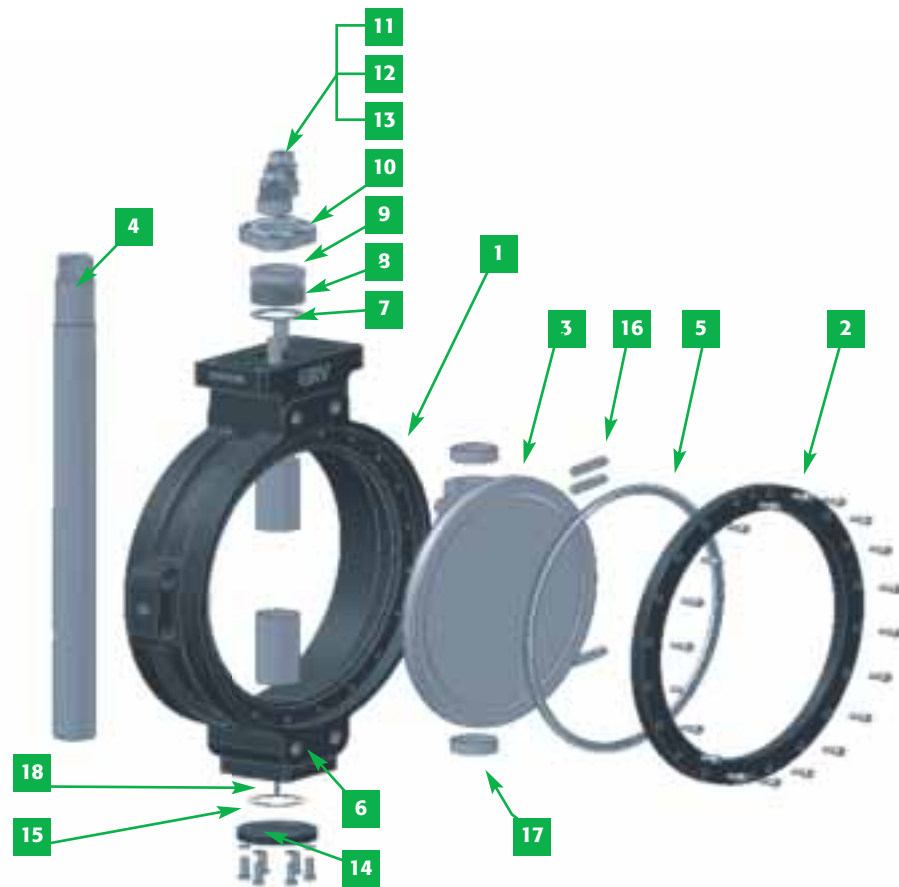
Material Of Construction



SERIES 740/741/742/743 – VALVES WITH PTFE SEAT

Part. N.	Name	S740-C01	S740-C02	S740-R01	S740-P02	
			S741-C01	S741-C02	S741-R01	S741-P02
			S742-C01	S742-C02	S742-R01	S742-P02
			S743-C01	S743-C02	S743-R01	S743-P02
		1	Body	Carbon steel ASTM A216 WCB		ASTM A351 CF8M
2	Seat retainer	Carbon steel		ASTM A182 316	ASTM A182 304	
3	Disc	ASTM A351 CF8M	ASTM A351 CF8	ASTM A351 CF8M	ASTM A351 CF8	
4	Stem	17-4PH				
5	Seat	PTFE / R-PTFE				
6	Stem bearing	Standard-type SS316 + PTFE		Fireproof-type SS316 + QPQ		
7	Spacer	SS 316				
8	Gland packing	Standard-type + PTFE		Fireproof-type flexible graphite		
9	Retainer	SS 316				
10	Gland retainer	ASTM A351 CF8				
11	Butterfly spring	17-7PH				
12	Spring case	SS 316				
13	Spring cover	SS 316				
14	Cover plate	Carbon steel		ASTM A351 CF8M	ASTM A351 CF8	
15	Gasket	Standard-type + PTFE		Fireproof-type flexible graphite		
16	Pin	17-4PH				
17	Thrust bearing	SS 316				
18	Antistatic spring	Inconel X-750				

Material Of Construction



SERIES 740/741/742/743-MG/MF – VALVES WITH METAL SEAT

Part. N.	Name	S740-C01	S740-C02	S740-R01	S740-P02
		S741-C01	S741-C02	S741-R01	S741-P02
		S742-C01	S742-C02	S742-R01	S742-P02
		S743-C01	S743-C02	S743-R01	S743-P02
		Carbon steel ASTM A216 WCB		ASTM A351 CF8M	ASTM A351 CF8
1	Body			ASTM A351 CF8M	ASTM A351 CF8
2	Seat retainer	Carbon steel		ASTM A182 316	ASTM A182 304
3	Disc	ASTM A351 CF8M	ASTM A351 CF8	ASTM A351 CF8M	ASTM A351 CF8
4	Stem	17-4PH			
5	Seat	SS 316			
6	Stem bearing	Standard-type SS316 + PTFE		High-temperature-type SS316 + QPQ	
7	Spacer	SS 316			
8	Gland packing	Standard-type + PTFE		High-temperature-type flexible graphite	
9	Retainer	SS 316			
10	Gland retainer	ASTM A351 CF8			
11	Butterfly spring	17-7PH			
12	Spring case	SS 316			
13	Spring cover	SS 316			
14	Cover plate	Carbon steel		ASTM A351 CF8M	ASTM A351 CF8
15	Gasket	Standard-type + PTFE		High-temperature-type flexible graphite	
16	Pin	17-4PH			
17	Thrust bearing	SS 316			
18	Antistatic spring	Inconel X-750			

Valves body made by duplex stainless steel can be also provided according to the requirements of actual operating conditions